

Single Use Cystoscope

Flexible insertion tube, ultra-thin working channel, does not restrict the patient's posture, reduce the trauma caused by examination and treatment.

High Image Quality

CMOS+LED technology for clear, natural-looking images



210°Up/210°Down

Wider Angle, no blind angle in bladder and urethra

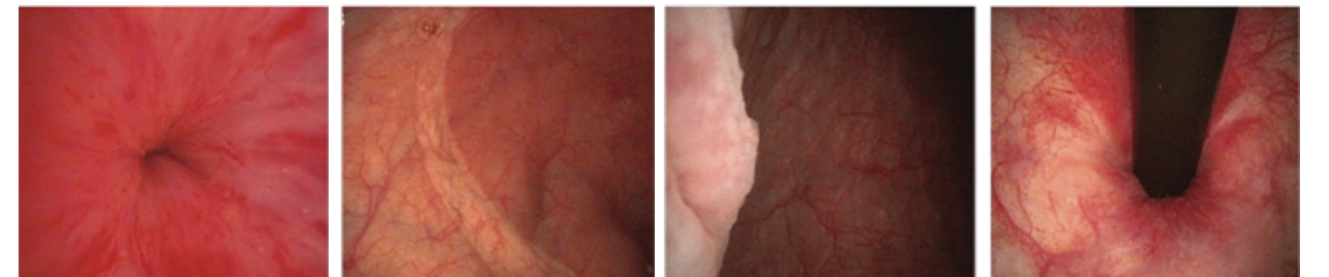


2.2mm Working Channel

Compatible with a variety of surgical instruments



Clearly present intravesical images



Product Parameters

Model	CY-F1
Insertion Tube Outer Diameter	5.2mm
Working Channel Diameter	2.2mm
Insertion Tube Length	380mm
Angulation Range	210°Up/210°Down