



# **URETEROSCOPY SOLUTIONS**

# Single Use Ureteroscope

Disposable ureteroscope has excellent performance, no repair and maintenance cost, no disinfection cost, hygienic and safe, and avoids cross-infection.

## Ergonomic

Effectively relieve fatigue during surgery

## 275°

275°excellent deflection in both directions

## True 1:1

1:1implementation of hand movements through to the distal end

## Luer Lock

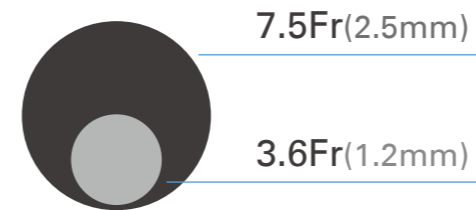
Included in every scope



# 7.5Fr Ultra Slim Insertion Tube

Compatible well with adjustable suction access sheath, bigger space to improve suction efficiency, more irrigation flow per time.

# 7.5Fr



## Bullet Design

Drilling into the ureter is easier



## Optimized Graphics

CMOS+2LED image technology

## Product Parameters

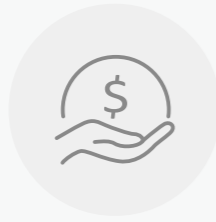
Model	UR-F1	UR-F2
Insertion Tube Outer Diameter	8.5Fr (2.8mm)	7.5Fr (2.5mm)
Working Channel Diameter	3.6Fr (1.2mm)	3.6Fr (1.2mm)
Working Length of Shaft	650mm	650mm
Angulation Range	275°Up/275°Down	275°Up/275°Down

# Reusable Flexible Ureteroscope

Reusable ureteroscopes can significantly reduce medical procurement costs. Following standardized cleaning and disinfection procedures ensures effectiveness and safety.



**Ultra-light Ergonomic Handle, Reduce fatigue**



**Reusable, Reduce cost**



**Ultra-clear Image**

## Luer Lock

With luer connector included in every scope



## Dual Buttons

For image capture/freeze video recording



**Ergonomic Handle**  
Effectively relieve fatigue during surgery

**Passive Bending**  
Automatically bends when encountering resistance

**275°Up/Down**  
Viewing angle

## More flexible operation



**8.4Fr**  
Insertion Tube



**Optimized Graphics**  
CMOS+2LED image technology

**Bullet Design**  
Drilling into the ureter is easier

### Product Parameters

Insertion Tube O.D	Working channel	Working length	Angulation Range
8.4Fr/9.0Fr	3.6Fr	650mm	275°Up/275°Down

# Percutaneous Nephroscope

## High-Resolution Imaging

Provides high-definition images, enhancing diagnostic accuracy.

## Durable and Reliable

Made from high-quality materials to ensure performance over multiple uses.

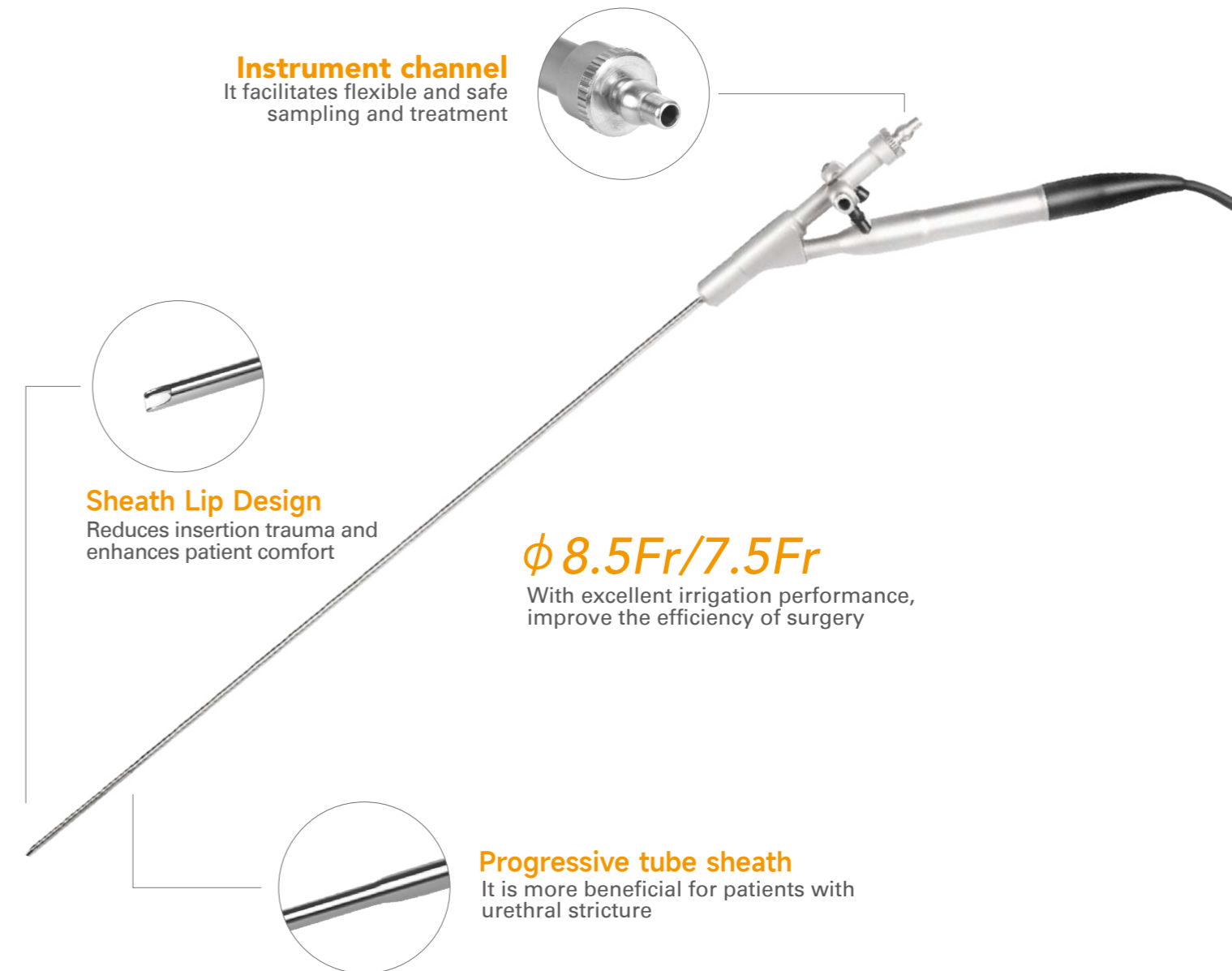
## Easy Sterilization

Easy to sterilize, meeting operating room hygiene standards.



# Rigid Ureteroscope

Integrated design, simple operation, safe and reliable, durable, clear imaging, easy to clean.



## Product Parameters

Model Number	Scope O.D	Working channel	Working length
Bview-3001	19.5Fr/16.5Fr	12Fr	230mm

## Product Parameters

Model Number	Scope O.D	Working channel	Working length
Bview-3002	8.5Fr/7.5Fr	4.8Fr	430mm

# Single Use Cystoscope

Flexible insertion tube, ultra-thin working channel, does not restrict the patient's posture, reduce the trauma caused by examination and treatment.

## High Image Quality

CMOS+LED technology for clear, natural-looking images



## 210°Up/210°Down

Wider Angle, no blind angle in bladder and urethra

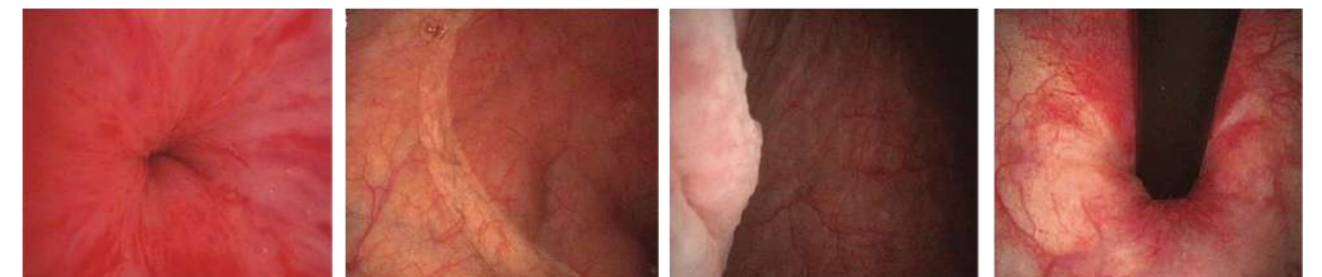


## 2.2mm Working Channel

Compatible with a variety of surgical instruments



## Clearly present intravesical images



### Product Parameters

Model	CY-F1
Insertion Tube Outer Diameter	5.2mm
Working Channel Diameter	2.2mm
Insertion Tube Length	380mm
Angulation Range	210°Up/210°Down

## Ureteral Access Suction Sheath

### Negative Pressure+Y sheath+Collection bottle

- Negative pressure suction design
- Provides better fluid control
- Increase stone removal rate

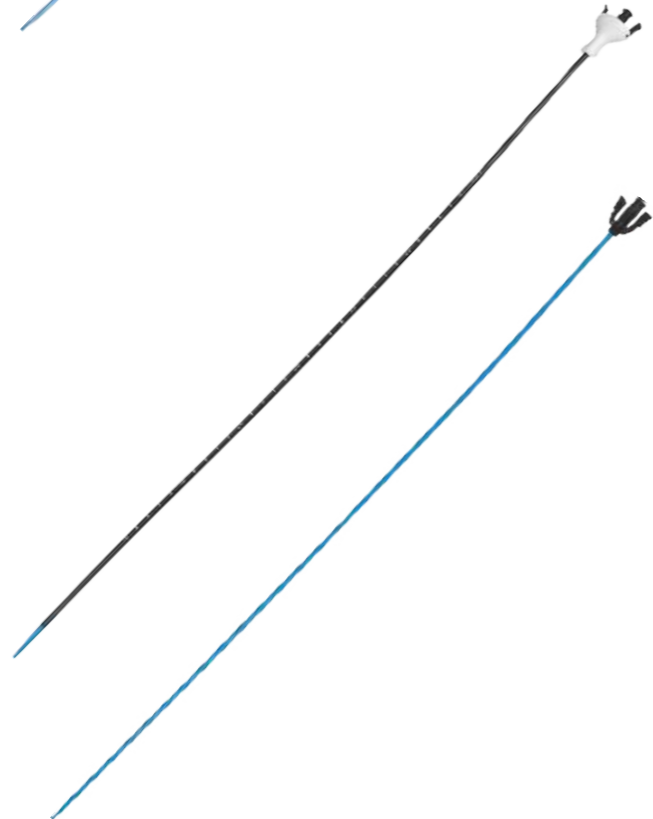
Product Code	Specification(Fr)	Tube Length(cm)
BAS8540Y	8.5	40
BAS8545Y		45
BAS8550Y		50
BAS8555Y		55
BAS9540Y		9.5
BAS9545Y	45	
BAS9550Y	50	
BAS9555Y	55	
BAS1040Y	10	
BAS1045Y		45
BAS1050Y		50
BAS1055Y		55
BAS1140Y		11
BAS1145Y	45	
BAS1150Y	50	
BAS1155Y	55	
BAS1240Y	12	
BAS1245Y		45
BAS1250Y		50
BAS1255Y		55
BAS1340Y		13
BAS1345Y	45	
BAS1350Y	50	
BAS1355Y	55	
BAS1440Y	14	
BAS1445Y		45
BAS1450Y		50
BAS1455Y		55



## Ureteral Access Sheath

- Improve the effectiveness and safety
- Reduce ureteral injury
- Convenient operation

Product Code	Specification(Fr)	Tube Length(cm)
BAS8540	8.5	40
BAS8550		50
BAS9540		9.5
BAS9550	50	
BAS1040	10	
BAS1050		50
BAS1140		11
BAS1150	50	
BAS1240	12	
BAS1250		50
BAS1340		13
BAS1350	50	
BAS1440	14	
BAS1450		50



## MIP1002

### Medical Image Processor With Monitor



**Photo & Video Function**



**Strong Compatibility**



**Patient Profiles Management**



## PRODUCT PARAMETERS

Model Number	MIP1002
Screen Size	10.1inch
Resolution	1280X800
Storage capacity	32 GB
Video input	10/14 pin lemo plug
Video output	AV,HDMI, SDI, DVI,USB3.0
Recording Format	JPG for photograph, MP4 for video
Function	Freeze, Snap, Recording, USB storage, White balance, Zoom in/Zoom out
Dimensions	260mm*210mm*50mm

# URETEROSCOPY SYSTEM CHART



10.1" Monitor



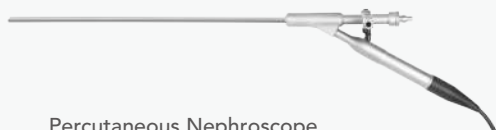
Single Use Ureteroscope



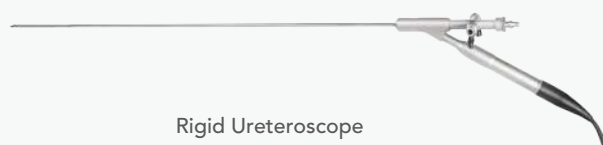
Single Use Cystoscope



Reusable Flexible Ureteroscope



Percutaneous Nephroscope



Rigid Ureteroscope

## SHENZHEN BESDATA TECHNOLOGY CO.,LTD

503, Building #2, Xinnantian Industrial Park, No. 3179, Danzi Avenue, Laokeng Community, Longtian Street, Pingshan District, Shenzhen, China.

☎ +86-755-84416070

✉ support@besdatatech.com

🌐 www.besdatatech.com